

## Rex® Durometer Operating Stands: Models OS-2H & OS-4H



Models OS-2H / OS-4H



Rex® Operating Stand Models OS-2H, OS-3 and OS-4H improve the reproducibility of test determinations in comparison to other non-automatic operating stands by controlling rate of descent of the durometer and the indenter to specimen contact angle.

The incorporation of an adjustable air dampening mechanism, reduces both intra-laboratory and inter-laboratory variability in test determinations caused by inconsistencies in the force with which the durometer is applied to the test specimen.

The Rex® Models OS-2H, OS-3 and OS-4H greatly reduce this operator introduced error and are a superior choice in non-automatic operating stands.

The Model OS-2H is designed for use with Type A, B and O durometers, the Model OS-4H is for use with Types OO and OOO.

The Model OS-3 is designed specifically for Type M durometers. All of the Rex® pneumatically dampened operating stands meet the stringent specifications for ASTM D2240 Type 3 operating stands.



Model OS-3

## Rex® Durometer Operating Stands: Models OS-1, OS-2 & OS-4



Model OS-1

The operating stand's primary function is to increase the accuracy, precision, repeatability and reproducibility of the hardness determinations made with Rex® durometers.

Rex® operating stands are designed to assure that the durometer presser foot is parallel to the specimen table, hence a perpendicular application of the indenter to the test specimen.

The employment of an operating stand also allows for precise positioning of the specimen, assuring proper distance intervals between multiple determinations.

The use of a detachable mass reduces variability in test determinations due to the application of inconsistent force generally experienced in manual application.

The Model OS-1 is designed for use with Type A, B, C, D, DO, O, OO, OOO and M durometers.

The Models OS-2 and OS-4 are compact versions of the Model OS-1. The Model OS-2 is designed for use with Type A, B and O durometers, while the Model OS-4 is for use with Types OO, OOO and M.



Models OS-2 / OS-4

The operating stand is primarily intended for use on test specimens with parallel sides. Irregularly shaped specimens may be tested if proper fixturing is provided to make the given surface parallel to the durometer presser foot.

## Rex® Durometer Operating Stands: Specimen Fixtures

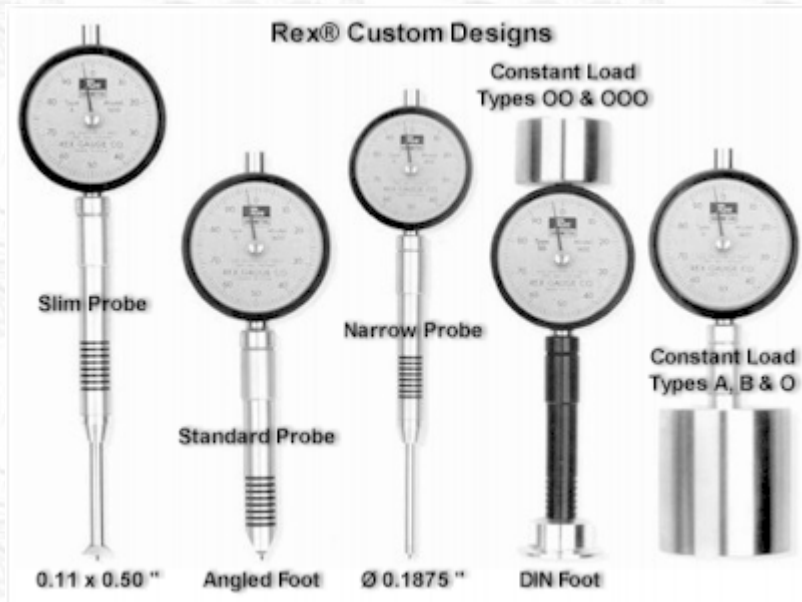


The o-ring fixturing set (ORF-1) enables the accurate testing of o-rings when mounted in a Rex® operating stand. The set consists of five fixtures to test o-rings with cross sections of 1/16, 3/32, 1/8, 3/16 and 1/4 inches (1.60, 2.38, 3.175, 4.76, and 6.35 millimeter). Custom and metric o-ring fixtures are also available.

## Rex® Durometer Operating Stand, Accessory & Fixture Pricing

Model	Description	Price
OS-1	Operating Stand for Types A, B, O, OO & OOO	<a href="#">Please Submit a RFQ</a>
OS-2	Operating Stand for Types A, B, O	<a href="#">Please Submit a RFQ</a>
OS-2H	Pneumatic Operating Stand for Types A, B, O	<a href="#">Please Submit a RFQ</a>
OS-3	Pneumatic Operating Stand for Type M	<a href="#">Please Submit a RFQ</a>
OS-4	Operating Stand for Types OO & OOO	<a href="#">Please Submit a RFQ</a>
OS-4H	Pneumatic Operating Stand for Types OO & OOO	<a href="#">Please Submit a RFQ</a>
ORF-1	SAE O-ring Fixture Set	<a href="#">Please Submit a RFQ</a>
CSORF-1	Metric / Special O-ring Fixture (individual)	<a href="#">Please Submit a RFQ</a>
Please specify size when specifying individual o-ring fixtures.		
CLW-A	Constant Load Mass for Types A, B and O	<a href="#">Please Submit a RFQ</a>
CLW-OO	Constant Load Mass for Types OO and OOO	<a href="#">Please Submit a RFQ</a>
NIST mass certification is available at an additional cost.		
DIN Foot	DIN Presser Foot Attachment	<a href="#">Please Submit a RFQ</a>
Big Foot	Large Ø Presser Foot Attachment	<a href="#">Please Submit a RFQ</a>
Please submit a <a href="#">Request for Quotation (RFQ)</a> for special foot attachments / probes.		

## Rex® Durometers: Custom Designs



Rex® modular durometers allow probe and presser foot designs to suit virtually any application! Shown above are some popular non-standard configurations, please submit a [Request for Quotation \(RFQ\)](#) describing your special requirements.

Copyright © 2006 CCSi, Inc. • All Rights Reserved • Published February, 2006

Corporate Consulting, Service & Instruments, Incorporated  
 221 Beaver Street • Akron, Ohio 44304 USA  
 Telephone: 800.742.8535 / 330.376.3600 • Facsimile: 800.229.9329 / 330.376.8500  
 • [WWW.CCSI-INC.COM](http://WWW.CCSI-INC.COM) • [WWW.ORECOZONE.NET](http://WWW.ORECOZONE.NET) •