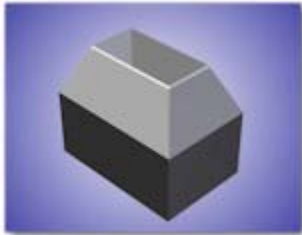
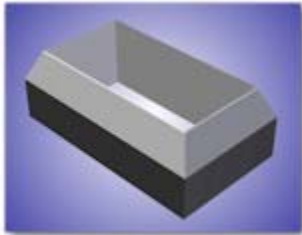


## CCSi *Ultra-Life* Specimen Cutting Dies: ASTM D925



*Ultra-Life* Method A & B Die



*Ultra-Life* Method C Die

CCSi manufactures these high quality Specimen Cutting Dies to evaluate three types of staining, or discoloration, that rubber may cause when in contact with, or in proximity to, another surface that may be lighter in color, as described in [ASTM D925](#) ‘*Standard Test Methods for Rubber Property – Staining of Surfaces (Contact, Migration, and Diffusion)*’.

The tests provide standardized procedures for evaluating changes in the appearance of the color (staining) of a subjected surface when conditionally exposed to a given rubber material:

- *Method A – Contact Stain* being that change in appearance which occurs when two separate surfaces are in direct contact with one another;
- *Method B – Migration Stain* being that change in appearance which occurs when two separate surfaces are within a specified proximity to one another;
- *Method C – Diffusion Stain* being that change in appearance which occurs when two surfaces are laminated (one acting as a coating over the other), this may be referred to as a veneer, ply, co-extrusion, or bond.

*Methods A & B* require rectangular test specimens measuring 12 x 25 mm (1 x 0.5 inch). While *Method C* requires rectangular test specimens measuring 38 x 75 mm (1.5 x 3 inch).

## CCSi *Ultra-Life* Specimen Dies: Quality Manufacturing

CCSi *Ultra-Life* specimen cutting dies are manufactured from homogenous, solid, high carbon content A2 tool steel. Each undergoes multi-axis precision grinding and conventional, plunge, or wire EDM (Electrical Discharge Machining) processes ... producing a world-class, close tolerance die.

Precision grinding and EDM processes ensure true parallelism and multi-plane dimensional accuracy. The quality of materials, design, and engineering serve to provide the highest specimen quality possible, over an extended service life.

Where highly technical manufacturing techniques and processes end ... old-world craftsmanship begins!

CCSi *Ultra-Life* specimen cutting dies are individually serialized, hand-honed, and mirror polished. A protective coating of industrial enamel is applied to the non-cutting surfaces before undergoing a rigorous final inspection.

Each *Ultra-Life* specimen cutting die includes a detailed final report and certification to the applicable standard, traceable to NIST, and compliant with ISO 9001:2000 and ISO/IEC 17025. The specimen dies are placed in a plastic, blow-molded, ‘clam shell’ style case with a foam lining to protect the die during transport and storage.

## CCSi *Ultra-Life* Specimen Dies: Features

The CCSi Specimen Cutting Dies Feature:

- Exclusive *Ultra-Life* cutting edge technology;
- Designed with advanced 3D solid modeling;
- High carbon content A2 tool steel;
- Manufactured using computerized systems and techniques;
- EDM (Electrical Discharge Machining);
- CNC (Computer Numerical Control) 4 axis machining;
- Precision ground;
- Expertly honed;
- Finely polished;
- Protective industrial enamel coating;
- Plastic, foam lined, protective case;
- Traceability of dimensional measurement to NIST;
- Certification to ASTM D925;
- Compliance with ISO 9001:2000 and ISO/IEC 17025;

Available in:

- ASTM D925 Methods A & B and Method C;
- Mallet handle, arbor press mount, & press adapter versions.

CCSi *Ultra-Life* ASTM D925 Specimen Cutting Dies: Specifications & Pricing

Part Number	Description	Dimensions
CCSi-D925-An	D925 Method A & B Die without mounting device	12 x 25 mm (0.47 x 0.98 inch)
CCSi-D925-Aa	D925 Method A & B with arbor press mount	
CCSi-D925-Ap	D925 Method A & B Die with press adapter	
CCSi-D925-Am	D925 Method A & B Die with mallet handle	
CCSi-D925-Cn	D925 Method C Die without mounting device	38 ± 1.5 x 75 ± 3 mm (1.5 ± 0.06 x 3 ± 0.12 inch)
CCSi-D925-Ca	D925 Method C with arbor press mount	
CCSi-D925-Cp	D925 Method C Die with press adapter	
CCSi-D925-Cm	D925 Method C Die with mallet handle	
Please Request a <a href="#">Quotation</a> for current pricing and delivery.		

Copyright © 2006 CCSi, Inc. • All Rights Reserved • Published February, 2006

Corporate Consulting, Service & Instruments, Incorporated  
221 Beaver Street • Akron, Ohio 44304 USA  
Telephone: 800.742.8535 / 330.376.3600 • Facsimile: 800.229.9329 / 330.376.8500  
• WWW.CCSI-INC.COM • WWW.ORECOZONE.NET •