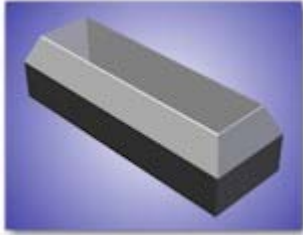


## CCSi *Ultra-Life* Specimen Cutting Dies: ASTM D2136



*Ultra-Life* D2136 Specimen Die

CCSi manufactures these high quality Specimen Cutting Dies for determining whether fabrics coated with rubber or rubber-like materials display increased stiffening when exposed to decreasing ambient (subnormal) temperatures, as described in [ASTM D2136](#) 'Test Method for Coated Fabrics – Low Temperature Bend Test'.

ASTM D2136 describes a basic procedure to ascertain a material's flexibility, and suitability for use, at a subnormal temperature.

CCSi provides the Hung Ta™ [Model HT8043](#) Refrigeration Chamber, which is suitable for performing the *Low Temperature Bend Test*. It has a sufficiently large interior chamber to accommodate the specimen bending apparatus, which CCSi also supplies by special order.

## CCSi *Ultra-Life* Specimen Dies: Quality Manufacturing

CCSi *Ultra-Life* specimen cutting dies are manufactured from homogenous, solid, high carbon content A2 tool steel. Each undergoes multi-axis precision grinding and conventional, plunge, or wire EDM (Electrical Discharge Machining) processes ... producing a world-class, close tolerance die.

Precision grinding and EDM processes ensure true parallelism and multi-plane dimensional accuracy. The quality of materials, design, and engineering serve to provide the highest specimen quality possible, over an extended service life.

Where highly technical manufacturing techniques and processes end ... old-world craftsmanship begins!

CCSi *Ultra-Life* specimen cutting dies are individually serialized, hand-honed, and mirror polished. A protective coating of industrial enamel is applied to the non-cutting surfaces before undergoing a rigorous final inspection.

Each *Ultra-Life* specimen cutting die includes a detailed final report and certification to the applicable standard, traceable to NIST, and compliant with ISO 9001:2000 and ISO/IEC 17025. The specimen dies are placed in a plastic, blow-molded, 'clam shell' style case with a foam lining to protect the die during transport and storage.

## CCSi *Ultra-Life* Specimen Dies: Features

The CCSi Specimen Cutting Dies Feature:

- Exclusive *Ultra-Life* cutting edge technology;
- Designed with advanced 3D solid modeling;
- High carbon content A2 tool steel;
- Manufactured using computerized systems and techniques;
- EDM (Electrical Discharge Machining);
- CNC (Computer Numerical Control) 4 axis machining;
- Precision ground;
- Expertly honed;
- Finely polished;
- Protective industrial enamel coating;
- Plastic, foam lined, protective case;
- Traceability of dimensional measurement to NIST;
- Certification to ASTM D2136;
- Compliance with ISO 9001:2000 and ISO/IEC 17025.

Available in:

- ASTM D2136 Standard Die.

## CCSi *Ultra-Life* ASTM D2136 Specimen Cutting Dies: Specifications & Pricing

Part Number	Description	Dimensions
CCSi-D2136-An	D2136 Die without mounting device	100 ± 2 x 25 ± 1 mm (3.94 ± 0.79 x 0.984 ± 0.039 inch)
CCSi-D2136-Aa	D2136 Die with arbor press mount	
CCSi-D2136-Ap	D2136 Die with press adapter	
CCSi-D2136-Am	D2136 Die with mallet handle	

Please Request a [Quotation](#) for current pricing and delivery.

Copyright © 2006 CCSi, Inc. • All Rights Reserved • Published February, 2006

Corporate Consulting, Service & Instruments, Incorporated  
221 Beaver Street • Akron, Ohio 44304 USA

Telephone: 800.742.8535 / 330.376.3600 • Facsimile: 800.229.9329 / 330.376.8500

• [WWW.CCSI-INC.COM](http://WWW.CCSI-INC.COM) • [WWW.ORECOZONE.NET](http://WWW.ORECOZONE.NET) •