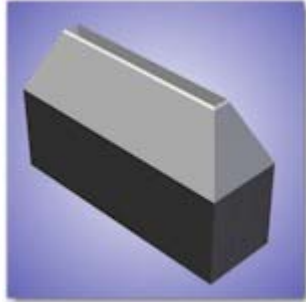


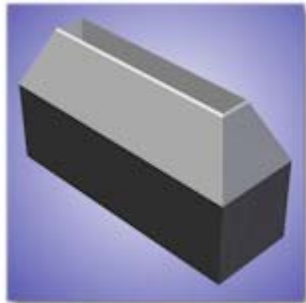
## CCSi *Ultra-Life* ASTM D1053 Specimen Cutting Dies: Description



*Ultra-Life* Method A, Type A Die

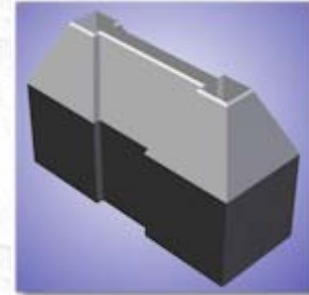
CCSi manufactures these high quality *Ultra-Life* Specimen Cutting Dies for measuring the stiffening of flexible polymeric materials and fabrics coated with flexible polymers using a torsional apparatus at subnormal temperatures. A routine inspection and acceptance procedure, used as a pass-fail test at specified temperatures, is also described in [ASTM D1053](#) 'Standard Test Methods For Rubber Property – Stiffening at Low Temperatures of Flexible Polymers and Coated Fabrics'.

There are two procedures, identified as Test Method A and Test Method B. Test Method A employs one of two specimen configurations, enumerated (somewhat confusingly) as Type A and Type B. The geometry of the *Test Method A, Type A* and *Test Method B, Type C* dies similar, being that both are rectangular, although dimensionally different.



*Ultra-Life* Method B, Type C Die

The *Test Method B, Type C* specification also allows for variation in the length of the specimen. There is latitude with regard to the thickness of all three types of test specimens, being that the subject material is the determinate of this dimension, within a specified range.



*Ultra-Life* Method A, Type B Die

The *Test Method A, Type B* geometry is entirely different, being commonly referred to as a 'dumbbell' shape. However, based upon 10 years of sales history, the Type B die is preferred commercially.

## CCSi *Ultra-Life* Specimen Dies: Quality Manufacturing

CCSi *Ultra-Life* specimen cutting dies are manufactured from homogenous, solid, high carbon content A2 tool steel. Each undergoes multi-axis precision grinding and conventional, plunge, or wire EDM (Electrical Discharge Machining) processes ... producing a world-class, close tolerance die.

Precision grinding and EDM processes ensure true parallelism and multi-plane dimensional accuracy. The quality of materials, design, and engineering serve to provide the highest specimen quality possible, over an extended service life.

Where highly technical manufacturing techniques and processes end ... old-world craftsmanship begins!

CCSi *Ultra-Life* specimen cutting dies are individually serialized, hand-honed, and mirror polished. A protective coating of industrial enamel is applied to the non-cutting surfaces before undergoing a rigorous final inspection.

Each *Ultra-Life* specimen cutting die includes a detailed final report and certification to the applicable standard, traceable to NIST, and compliant with ISO 9001:2000 and ISO/IEC 17025. The specimen dies are placed in a plastic, blow-molded, 'clam shell' style case with a foam lining to protect the die during transport and storage.

The CCSi Specimen Cutting Dies Feature:

- Exclusive *Ultra-Life* cutting edge technology;
- Designed with advanced 3D solid modeling;
- High carbon content A2 tool steel;
- Manufactured using computerized systems and techniques;
- EDM (Electrical Discharge Machining);
- CNC (Computer Numerical Control) 4 axis machining;
- Precision ground;
- Expertly honed;
- Finely polished;
- Protective industrial enamel coating;
- Plastic, foam lined, protective case;
- Traceability of dimensional measurement to NIST;
- Certification to ASTM D1053;
- Compliance with ISO 9001:2000 and ISO/IEC 17025;

Available in:

- ASTM D1053 *Method A, Type A*;
- ASTM D1053 *Method A, Type B*;
- ASTM D1053 *Method B, Type C*;
- Mallet handle, arbor press mount, & press adapter versions.

CCSi *Ultra-Life* ASTM D1053 Specimen Cutting Dies: Specifications & Pricing

Part Number	Description	Dimensions
CCSi-D1053-An	Type A Die without mounting device	40 ± 2.5 x 3.0 ± 0.2 mm (1.5 ± 0.1 x 0.125 ± 0.008 inch)
CCSi-D1053-Aa	Type A Die with arbor press mount	
CCSi-D1053-Ap	Type A Die with press adapter	
CCSi-D1053-Am	Type A Die with mallet handle	body: 25.5 ± 0.5 x 3.0 ± 0.2 mm (1.004 ± 0.02 x 0.125 ± 0.008 inch)
CCSi-D1053-Bn	Type B Die without mounting device	
CCSi-D1053-Ba	Type B Die with arbor press mount	
CCSi-D1053-Bp	Type B Die with press adapter	
CCSi-D1053-Bm	Type B Die with mallet handle	ends: 6.0 ± 1.0 x 6.0 ± 1.0 mm (0.024 ± 0.04 x 0.024 ± 0.04 inch)
CCSi-D1053-Cn	Type C Die without mounting device	44 - 0 / + - x 6.3 ± 0.2 mm (1.75 - 0 / + - x 0.250 ± 0.008 inch)
CCSi-D1053-Ca	Type C Die with arbor press mount	
CCSi-D1053-Cp	Type C Die with press adapter	
CCSi-D1053-Cm	Type C Die with mallet handle	
Please Request a <a href="#">Quotation</a> for current pricing and delivery.		

Copyright © 2006 CCSi, Inc. • All Rights Reserved • Published February, 2006